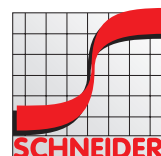
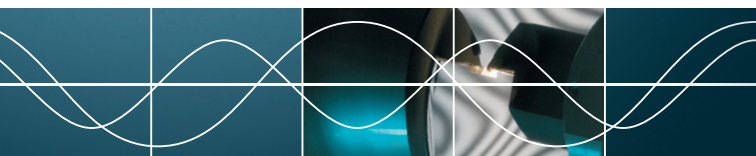




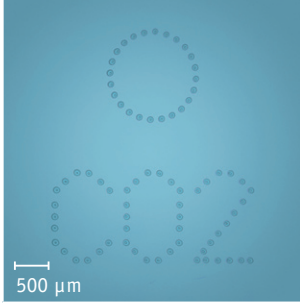
CCL C*mark

Laser marking – the easy way

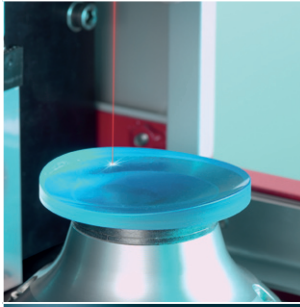


Fascination for Innovation

Precise marking patterns
Special laser marking algorithms result in fine and consistent patterns.



Robust precision clamping
A precision clamp guarantees smallest tolerances after thousands of marking cycles.



Clearly arranged operator display
For ease of operation, a touch-panel guides the operator through clearly arranged displays.



CCL C*mark

Laser marking has become an essential part of the modern surfacing lab. Functional laser marks and product branding are the modern stamps of high-quality lenses. With the laser marking system CCL C*mark, fine markings can be accomplished with ease and precision. Based on the industry-proven CO₂ laser and proprietary scanning technology, the machine offers quality laser marking for the lowest cost per lens in the market.

Designed for a wide range of lab environments, this machine can run as table-top machine or with an optional automation system, respectively. The robust design and implemented safety features exceed international safety regulations, reducing the operator requirements to a minimum.

Benefits

- Precise marking positions
- High throughput
- No consumables
- Optional automation
- Easy to operate
- Minimum maintenance
- High safety standards
- Small footprint
- Economical laser marking unit



technical data

lens material	CR39, Hi-index, Polycarbonate, Trivex®
marking field size	ø 70 mm
dot size	approx. 100 μm
accuracy	+/- 30 μm
clamping system	block ø 43 mm
power requirement	1 kW max.
air requirement	5 bar (75 psi) min.
laser safety	laser class I
weight machine	125 kg (275 lb.)
machine with automation	210 kg (463 lb.)
dimensions (width x length x height) machine	340 x 870 x 600 mm (14 x 34 x 24 inches)
machine with automation	750 x 1290 x 1500 mm (30 x 51 x 59 inches)

SCHNEIDER GmbH & Co. KG
Brückenstrasse 21
35239 Steffenberg
Germany
Phone: +49 (64 65) 91 44-0
Fax: +49 (64 65) 46 63
www.schneider-om.com
info@schneider-om.com

Schneider Optical Machines
1313 Valwood Parkway
Suite #200
Carrollton, Texas 75006 USA
Phone: +1 (972) 247-4000
Fax: +1 (972) 247-4060
info-us@schneider-om.com

Schneider Optical Machines
South East Asia Pte.Ltd.
Phone: +65 /9040 9218
info-asia@schneider-om.com

